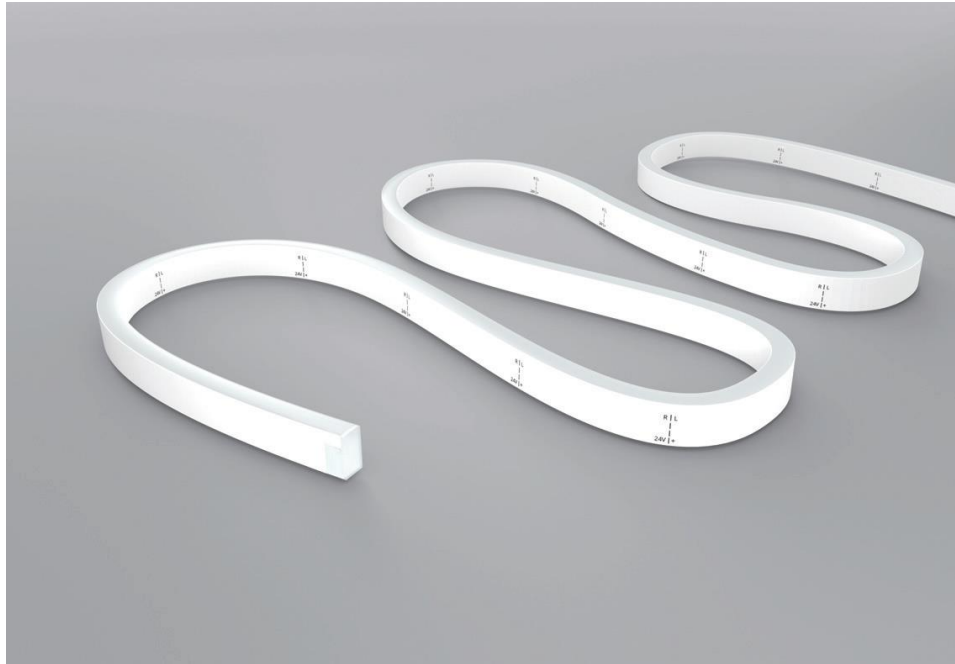


Neon Flex SPI 12V - Datasheet

Horizontal bendable weatherproof RGBW 12V SPI pixel strip with 20 pixels per meter



Introducing ENTTEC Neon Flex: the ultimate lighting solution that combines flexibility, durability, and ease of installation. Made with high-quality silicone material, this weatherproof LED strip is designed to withstand any environment.

With its horizontal bendable feature, ENTTEC Neon Flex allows for effortless shaping and contouring, enabling you to create stunning and unique lighting designs.

Installing our Neon Flex is a breeze with our range of connector styles along with versatile installation accessories. With its surface or recess-compatible mounting accessories and versatile power connector options, Neon Flex ensures a sleek and professional finish.

Illuminate your space with our versatile, weatherproof, and easy-to-install SPI controllable Neon Flex. Experience the freedom to unleash your creativity and transform any area into a captivating visual spectacle.

FEATURES

- **12V SPI controllable LED Strip.**
- **Premium FPC with 4OZ thick copper for good conductivity and folding resistance.**
- **Auto-addressing pixels for streamlined commissioning.**
- **Horizontal bendable for effortless shaping and contouring.**
- **Flexible LED strip made with high-quality anti-yellowing silicone material resistant to UV, corrosion, solvents and salt water.**
- **IP68/IK08-rated durable weatherproof design.**
- **Easy installation with a range of connector styles and installation accessories.**
- **Customisable length tailored to unique needs.**
- **This product requires an external DC power supply and data source for operation, which are not included.**

SPECIFICATIONS

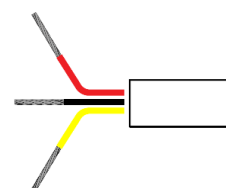
LED Source	Epistar SMD LED 5050	
Colour	RGBW (4000K)	
Lumens Output (lm/m)	Red	29
	Green	91
	Blue	20
	White	110
	RGBW	246
Control protocol	SPI - UCS8904	
Input Voltage	12V DC	
Power Consumption	17W/m	
LED Lifetime	70,000 Hours L70 @ 25°C 50,000 Hours L70 @ 50°C	
Body material	Silicone	
LED Count	60 LEDs/m	
Pixel Quantity	20 Pixels/m	
LED per Pixel Unit	3 LEDs	
Unit Length	50mm	
Minimum Bendable Diameter	80mm	
Max Run Length	Single Feed: 4M Double Feed 8M	
Beam Angle	120°	
IK Rating	IK08	
IP Rating	IP68 Wet location submersible <2m	
Temperature Range	Installation: 0°C to 50°C Operating: -40°C to 55°C	
Connector type	IP68 Twist lock connector	
Dimension	21mm x 11.5mm	
Connector pinout	Red	12V+
	Black	GND
	Yellow	Data
Warranty	3 Year Return to Base Manufacturer Warranty	

CERTIFICATION



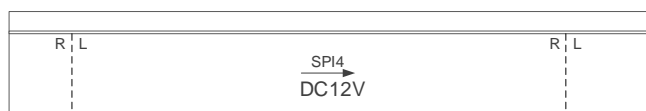
PIN OUT

- Red – 12V+
- Black – GND
- Yellow - Data



DATA DIRECTION

The SPI pixel data in the Neon Flex must travel in a specific direction for it to function. This direction can be identified through the direction of the arrow printed on the Neon Flex.

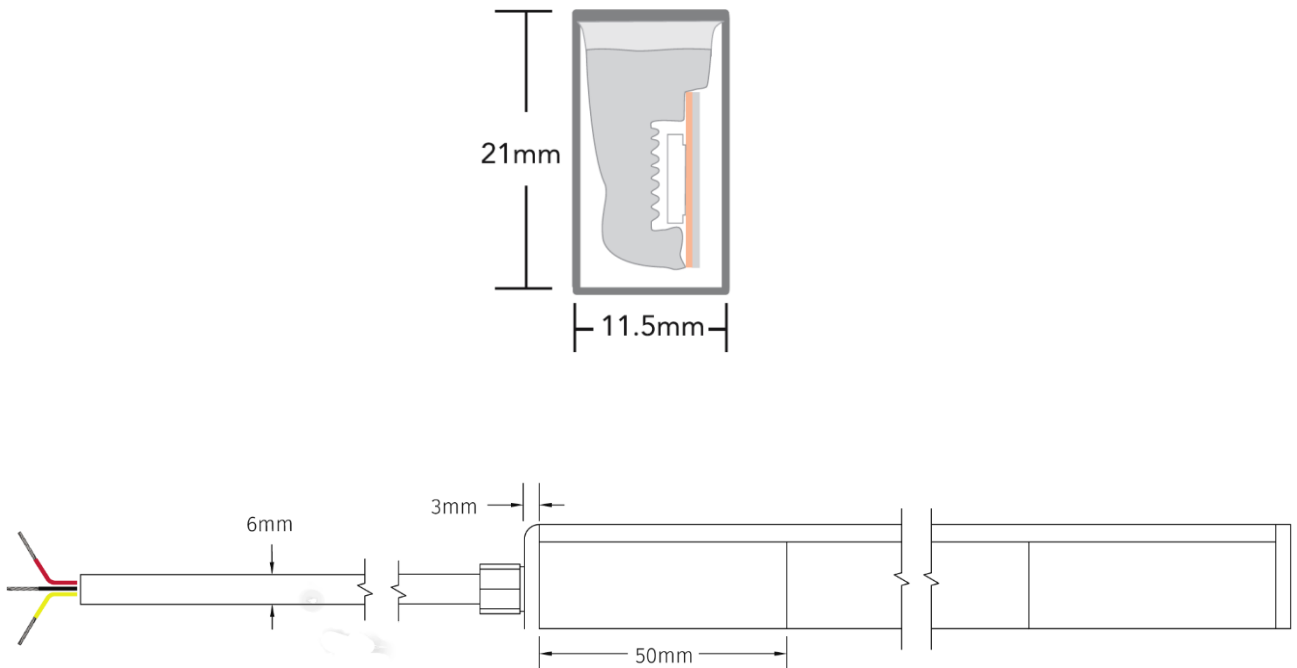


INSTALLATION

Prior to handling or specifying this product, ensure you refer to its installation guide and the safety instructions. If you have any uncertainties, don't hesitate to consult ENTTEC for guidance.

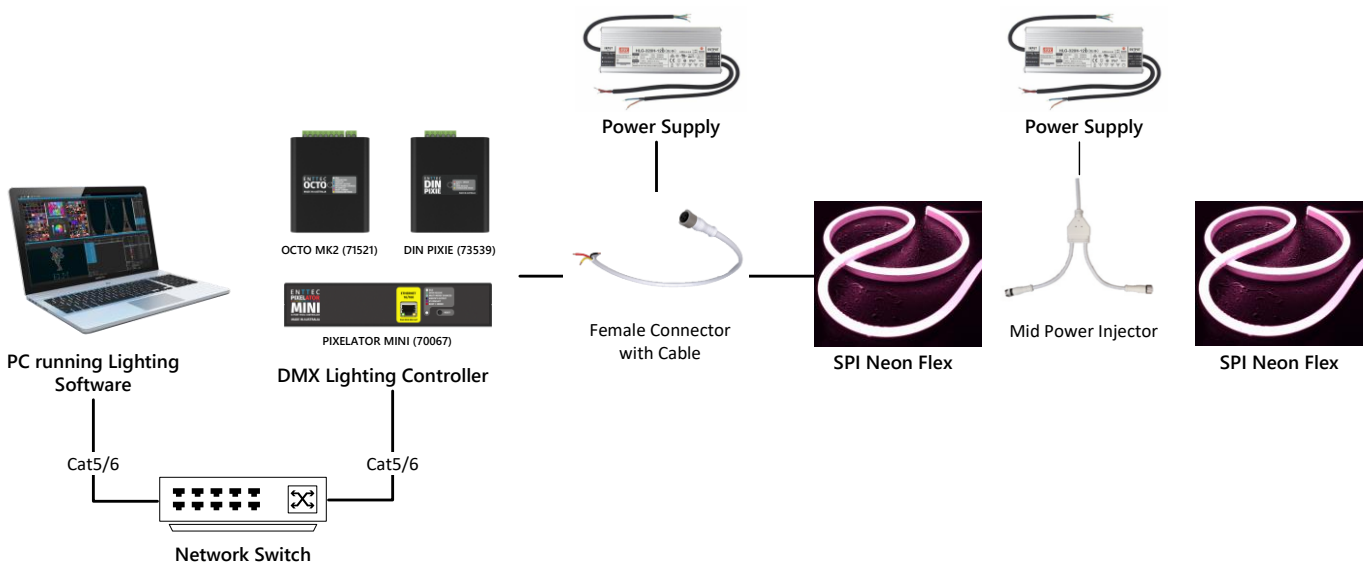
Note: Your Neon Flex will be cut to order for you. DIY cutting on the product will void its warranty.

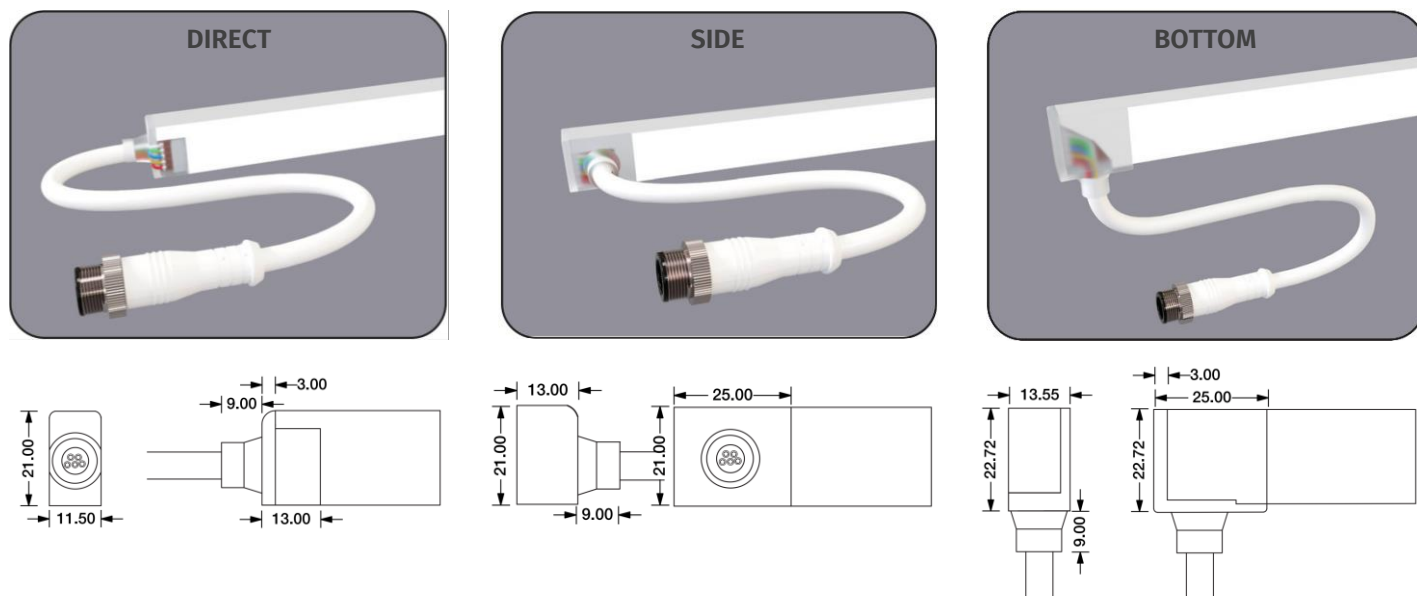
PHYSICAL DIMENSIONS



APPLICATION

Use any compatible ENTTEC SPI Pixel controller to control the Neon Flex SPI 12V Strip. To see the full range of pixel controllers, please visit www.enttec.com for the latest information.



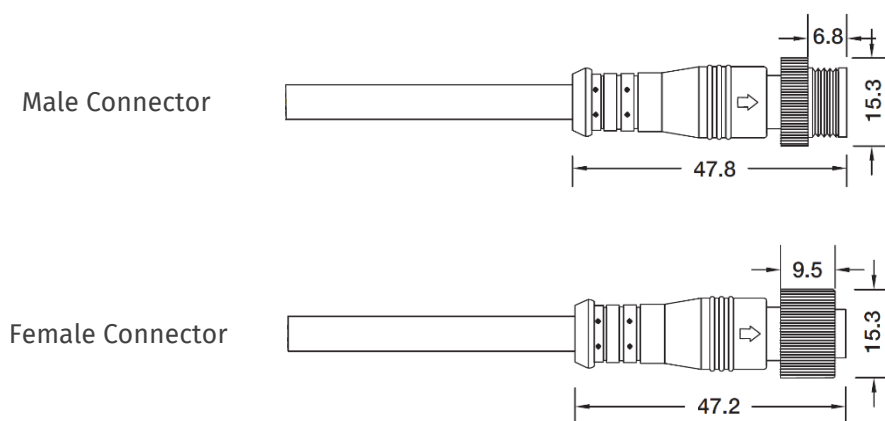


CONNECTOR CONFIGURATION

The male and female waterproof connector is manufactured using a two-layer injection molding process, incorporating high viscosity TPU and high-density nylon materials. When securely fastened with the stainless steel locking ring, it offers outstanding reliability and waterproof performance, achieving an IP68 rating.

Choose between the 2 options for the Connector Configuration:

- **SM:** Male connector in and end cap sealed in the other end.
- **SFM:** Male connector in and female connector out.



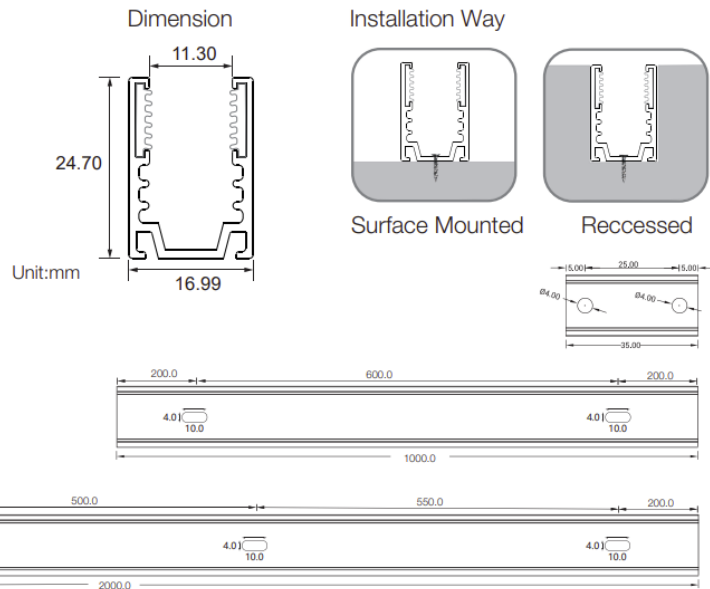
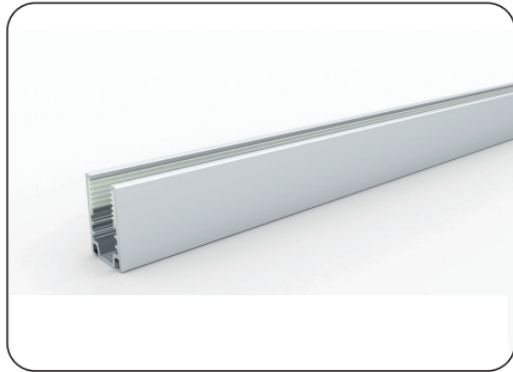
CUSTOMISATION

PN	Variant	Protocol	Voltage	LED Type	LED Density	Length [Customisable]		Connector Style	Connector Config	Lead in Length	Lead Out Length
						Min.	Max.				
73060	S1	SPI	12V	RGBW (4000K)	60	Min.	300mm	Direct	SM Male Connector In, sealed end cap	Min: 0.2m	Min: 0.2m
						Increment Step	50mm	Side			
						Max.	Single Feed: 4m Double Feed: 8m	Bottom	SFM Male connector In, Female Connector Out.		

MOUNTING OPTIONS

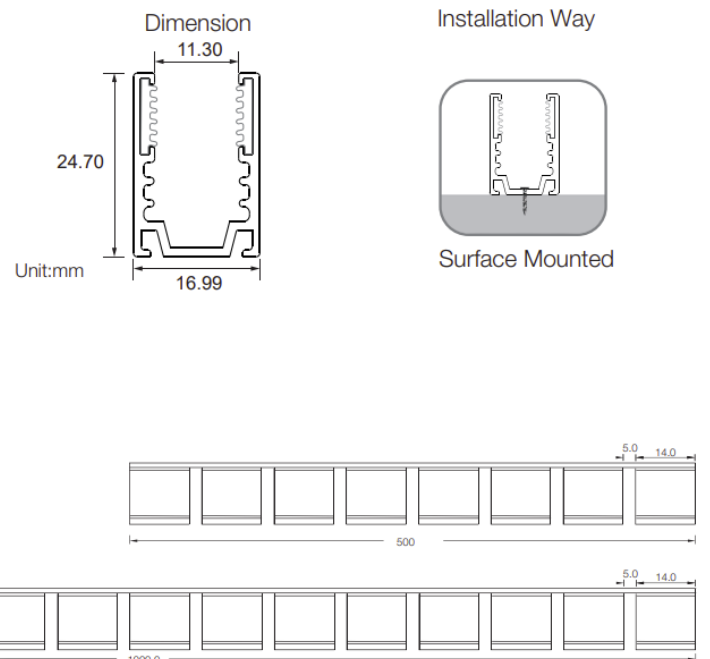
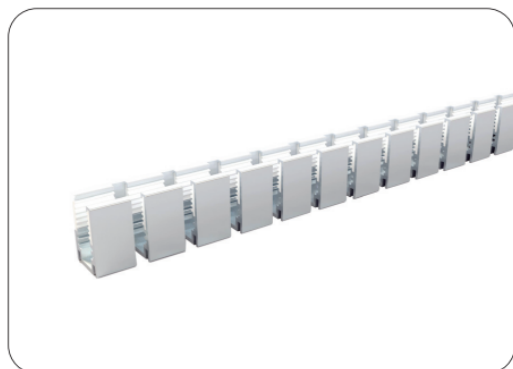
Straight Linear

PN	W x H (mm)	Standard Length	Screw Holes size	Holes Numbers
73061	16.99 x 24.70	1000mm	4.0mm	2



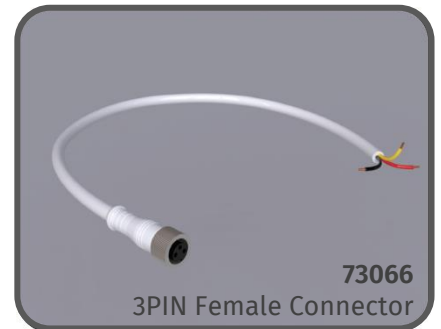
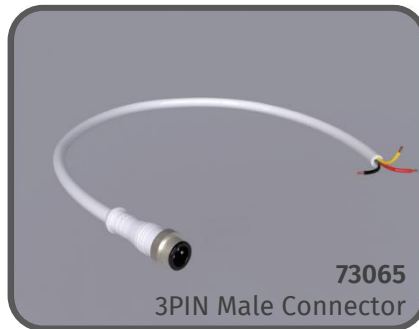
Curved

PN	W x H (mm)	Standard Length
73062	16.99 x 24.70	500mm
73063		1000mm



ACCESSORIES

PN	Product	Description	Standard Length
73064	3Pin - Power Injector Connector	3-pin bare wire to female and male connection (1 to 2)	2000mm
73065	3Pin – Male Connector with Cable	3-Pin Male connector to bare wire input. (1 to 1)	
73066	3Pin - Female Connector with Cable	3-Pin Female connector to bare wire input. (1 to 1)	
73067	3Pin – Extension Cable	3-Pin Extension Cable with Male & Female Connector	



enttec.com

MELBOURNE AUS / LONDON UK / RALEIGH-DURHAM USA / DUBAI UAE

Due to constant innovation, information within this document is subject to change.