

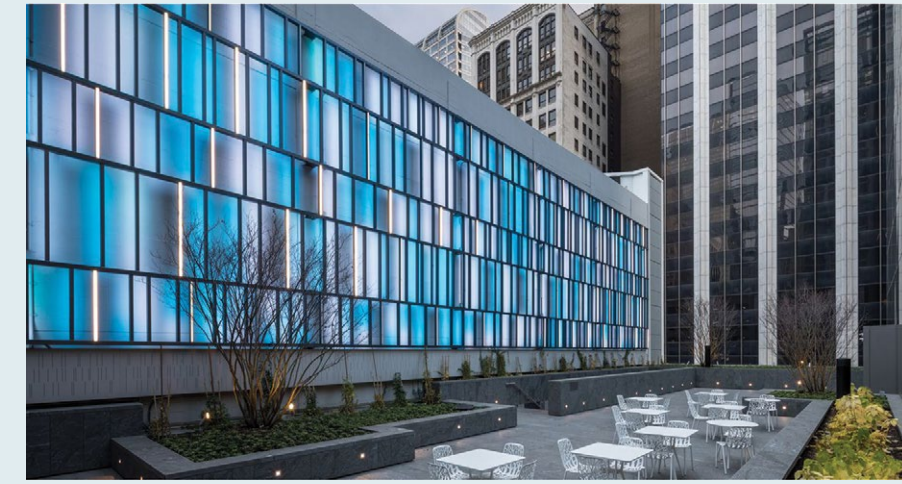


ENTTEC

Integrating DMX lighting control within existing Smart Home and building automation systems

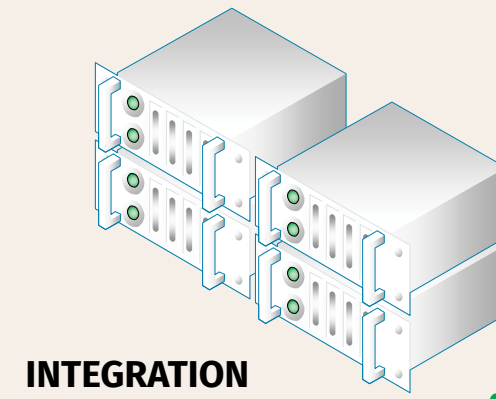


Schedule decorative lighting sequences from your integration system



ENTTEC

Controls . Lights . Solutions



INTEGRATION CONTROLLER

RS232



UDP/HTTP

Dry contact/contact closure x 4



SENSORS/SWITCHES

Link dynamic lighting to your existing lighting control system



DMX CONTROLS

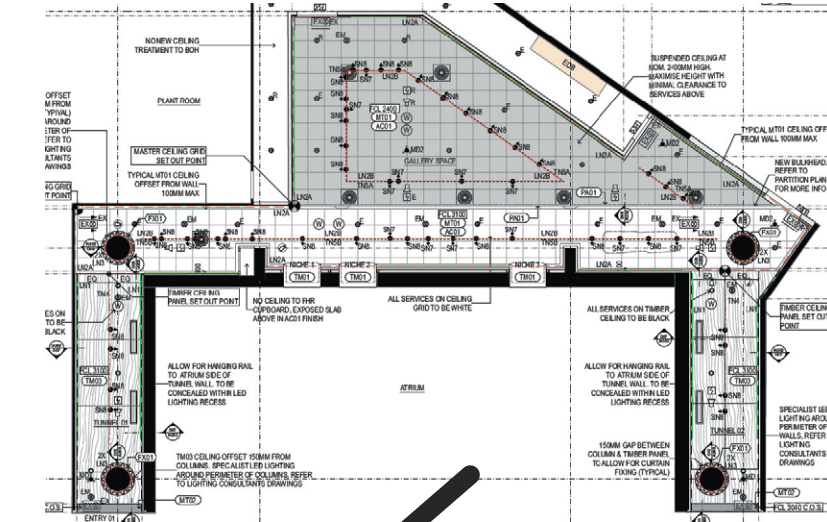


PIXEL CONTROLS



What is DMX?

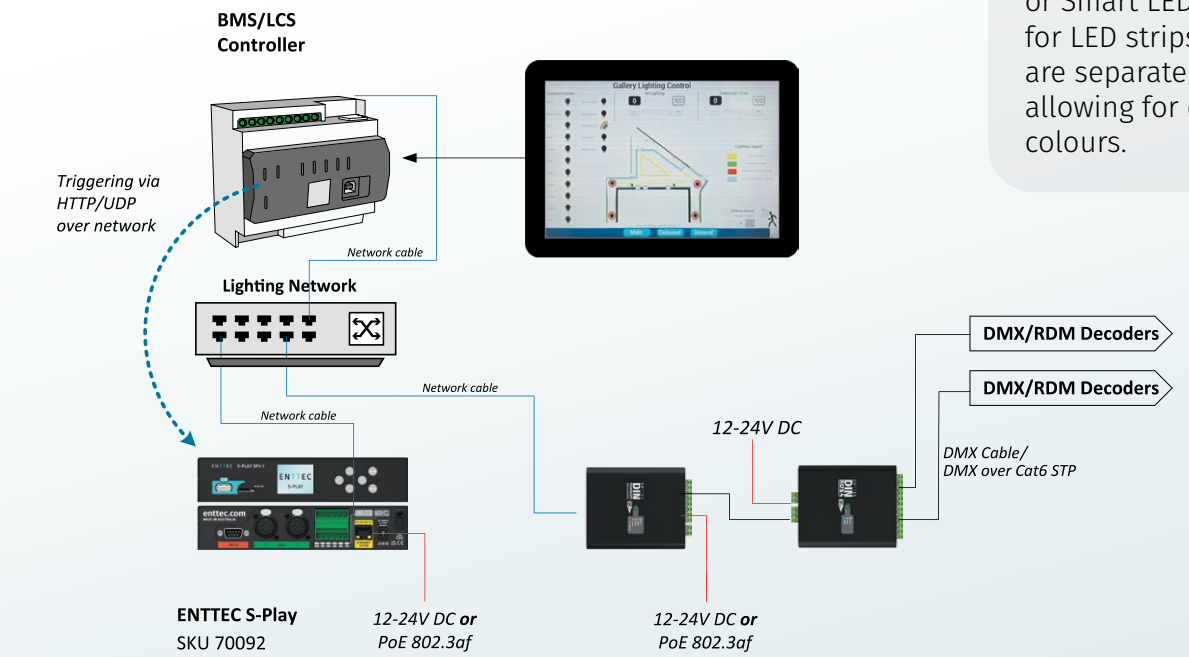
Digital MultipleX is a lighting control protocol that is used especially for coloured and decorative lighting because of its fast send rate of 250kb/s.



Bring your vision to life: ENTTEC can help you turn your concept into schematic diagrams and itemised quotes.

Pixel?

Pixel LEDs, addressable LEDs or Smart LEDs are all terms for LED strips or dots that are separately controllable, allowing for dynamic, moving colours.



Talk to one of our friendly project consultants today and learn how integrating ENTTEC DMX lighting solutions with your existing system can take your setup to a whole new level.

ENTTEC Europe
sales@enttec.co.uk
+44 (0) 207 061 6210

ENTTEC Asia-Pacific
sales@enttec.com.au
+61 (3) 9763 5755

ENTTEC Americas
sales.americas@enttec.com
+1 (888) 454-5922

ENTTEC Middle East / Africa
sales@enttec.ae
+971 (4) 337 4500